

PAU DE ARARA

Composição : Luiz Gonzaga e Guio de Moraes, 1952
ADAPTAÇÃO E ARRANJO PARA ORQUESTRA HEARTBREAKERS : DINO BARIONI

GUITAR

(DRUM) 8 BASE

12

F-6 % % % % % G° Gb7 F-6

17

(A) VOZ F- F-(7M) F-7 F-(7M) F- F9b Bb- Bb-(7M) Bb-7 Bb-(7M)

25

Bb- % Bb-7 Eb7 Ab7M F-7 Db7 C7

31

F-7 % Db7 C7 F-7 % 8 Eb7 %

39

Ab7M % G7 % C7 % F9b %

47

Bb-9 % F-7 Db7 1 C7 % 2 C7 C7 F-7

55

(INTER) F-6 % % % % % G° Gb7 F-6

63

 solo metais

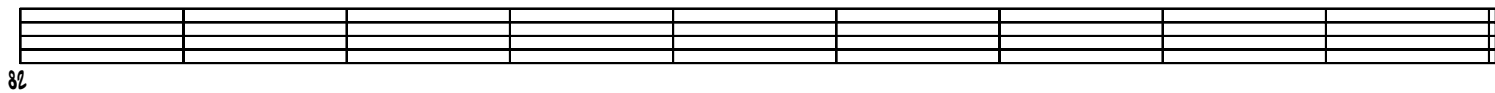
F- F-(7M) F-7 F-(7M) F- F9b Bb- Bb-(7M)




Bb-7 Bb-(7M) Bb- % Bb-7 Eb7 Ab7M



F-7 Db7 C7 F-7 % Db7 C7 F-7 %

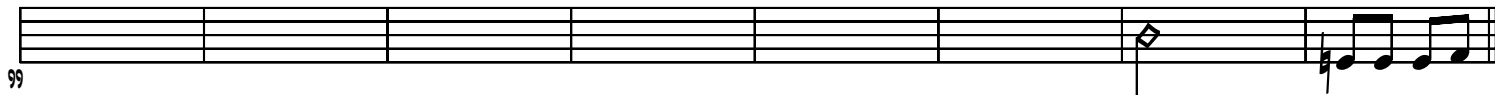


 **V02**

Eb7 % Ab7M % G7 % C7 %



F9b % Bb-9 % F-7 Db7 C7 C7 F-7



(FINAL)

